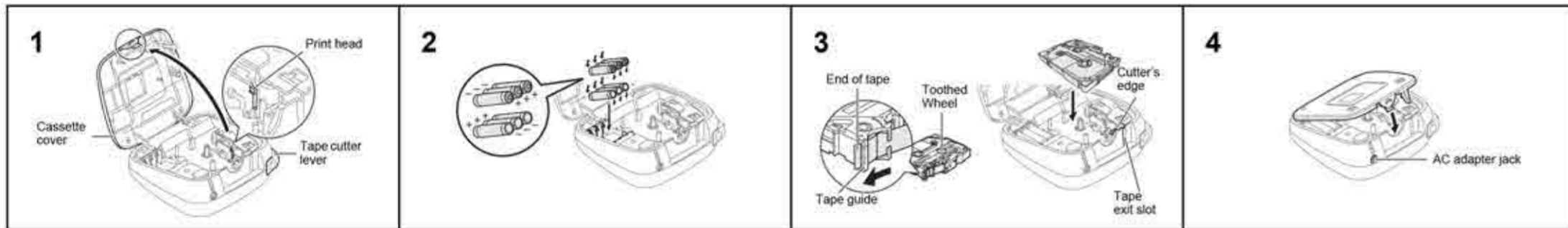


With your PT-D200, you can create labels for multiple applications. Select from the many frames, character sizes and styles to design beautiful custom labels. In addition, the variety of tape cartridges available allows you to print labels with different widths and exciting colors.

Power Supply and Tape Cassette



Open the cassette cover by pressing the above indicated area at the top end of the machine. If a tape cassette is already installed, remove it by pulling it straight up. Also, if batteries are already installed, remove them.

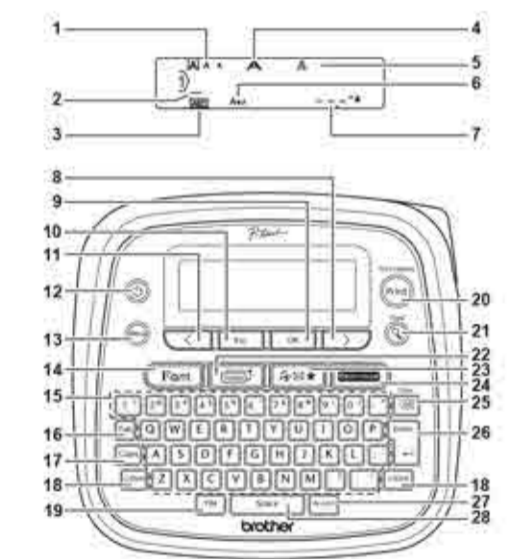
Insert six new AAA alkaline batteries (LR03) or fully charged Ni-MH batteries (HR03), making sure that their poles point in the correct directions. Users of alkaline batteries: Always replace all six batteries at the same time with brand new ones.

Insert a tape cassette, making sure that it snaps into place. Make sure that the end of the tape feeds under the tape guides.

Securely close the cassette cover, making sure that it snaps into place.

NOTE: Visit us at http://solutions.brother.com/ for the latest information about the recommended batteries.

LCD Display & Keyboard



- 1. Size 2. Cursor 3. Underline/Frame 4. Width 5. Style 6. Caps 7. Label Length 8. Cursor key - Right 9. OK key 10. Escape key 11. Cursor key - Left 12. Menu key 13. Underline/Frame 14. Width 15. Character key 16. Tab key 17. Caps key 18. Shift key 19. File key 20. Print key 21. Preview key 22. Frame key 23. Symbol key 24. DECO MODE key 25. Backspace key 26. Enter key 27. Accent key 28. Space key

NOTE: The LCD shows one row of 15 characters; however, the text that you enter can be up to 80 characters in length. While selecting the settings, press Space key to go back to the default items.

Troubleshooting

Table with 2 columns: Message and Cause/Remedy. Rows include Low Battery, Battery Dead, Invalid, No Text, and Line Limit.

Table with 2 columns: Message and Cause/Remedy. Rows include No Cassette!, Cutter Error, Text Full!, Text Limit!, No Frame OK?, OK to Feed?, Insert 0.47", and Wrong Tape!

Specifications

Dimensions: Approx. 6.49" x 6.10" x 2.67" (Approx. 165(H) x 155(D) x 68(H)mm) Weight: Approx. 1.08 lb. (Approx. 490 g) Power supply: Six AAA alkaline batteries (LR03) Six AAA Ni-MH batteries (HR03)* Optional AC adapter (AD-24ES) Tape cassette: Brother TZ2 tape (width) 0.13" (3.5mm), 0.23" (6mm), 0.35" (9mm), 0.47" (12mm)

* Visit us at http://solutions.brother.com/ for the latest information about the recommended batteries.

NOTE: The print preview is a generated image of the label, and may differ from the actual label when printed. Label length shown on LCD may slightly differ from the actual label length when printed.

What to do when...

Table with 2 columns: Problem and Solution. Rows include display blank, power off, tape not printing, and blank horizontal line.

Initial Settings

- 1 Start your machine. Supply power by using six AAA batteries or the optional AC adapter (AD-24ES), and then press [Power]. 2 Set the language. The default setting is [English]. 3 Set the unit of measurement. The default setting is [inch].

NOTE: The machine automatically turns off if no keys are pressed within five minutes. To cancel any operation, press [Esc].

Table with 2 columns: Problem and Solution. Rows include machine locked up, power turns off, tape gets stuck, and all text and format settings.

CAUTION

Indicates a potentially hazardous situation which, if not avoided, may result in minor or moderate injuries. Follow these guidelines to avoid personal injury, liquid leakage, burns or heat.

General Precautions

Depending on the location, material, and environmental conditions, the label may strip or become removable. The color of the label may change or be transferred to other objects. Before applying the label, check the environmental conditions and the material.

FCC NOTICE

This device complies with Part 15 of the FCC Rules. Operation is subject to the following two conditions: (1) This device may not cause harmful interference, and (2) this device must accept any interference received, including interference that may cause undesired operation.

BASIC USAGE

Entering Text

Diagrams and instructions for switching upper/lower case, making two lines of text, and changing label length.

Printing Labels

Diagrams and instructions for previewing, setting margins, feeding, printing, and using print options.

Saving Label Files

Instructions for saving label files, including steps for saving and printing.

USING TEMPLATES

Name Label

Diagrams and instructions for entering accented characters, changing label length, and using DECO MODE.

Font Key

Table showing font settings for various characters and symbols.

Accessories

Instructions for using accessories like tape cassettes, AC adapters, and cutter units.

DECO MODE

Diagrams and instructions for using DECO MODE to create unique labels.

Symbol Key

Table showing symbol settings for various characters and symbols.

Resetting the P-touch

Instructions for resetting the P-touch labeler, including steps for turning off power and releasing the cutter unit.

Frame Key

Diagrams and instructions for using frame keys to select label frames.